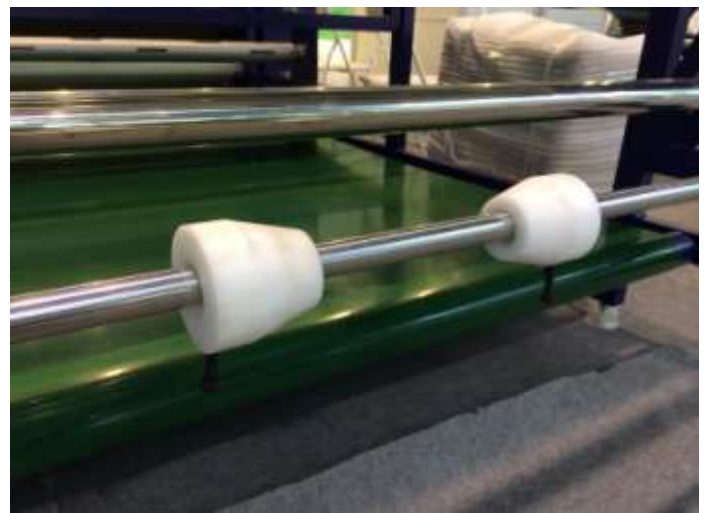


## Thermal Transfer Machine – Comparison between Eastsign and other manufacturer

Eastsign:

Other Manufacturer :



Plugs from Eastsign are coated by aluminium. It is light in weight and flexible, so it is durable and more resistant to wearing.

Plug from other manufacturer are made of plastics. So it is not able to fix the material on the shaft. The screw is not strong enough to add friction on the material

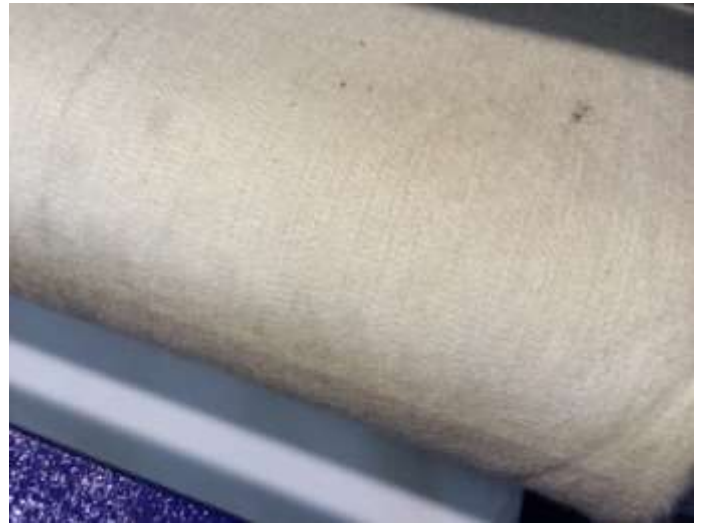


Eastsign main driving roller is made by silicon rubber roller. Silicon rubber is more flexible and frictional, therefore, it causes less damage to blanket and distributes even pressure on blanket.

Main driving roller from other manufacturer is made of metal with pattern. It is low in cost, but it causes damages to the blanket.



Blanket from Eastsign is 100% made of Metamax, which raw material is imported. Lifetime of blanket is longer than that from other supplier. Also, the blanket is still stable in high temperature and smooth for transfer printing.



Blanket from other supplier is made of domestic raw materials. The blanket will deform in high temperature. Also, the surface is not smooth, which affect the transfer printing. It is easy to find significant difference by naked eye.



Blanket can be easily separated from oil drum by turbine-driven synchronizing axle. Blanket will be returned to the same position every time after separation.



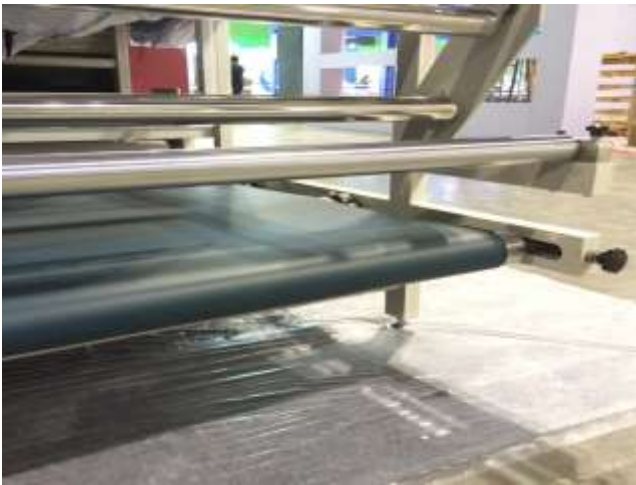
Some manufacturer did not apply synchronizing axle to the machine. Therefore, it takes a lot of time to separate the blanket from the oil drum. Also, it cannot resume the blanket to the original position each time.



Eastsign Oil Drum



Oil Drum from other mill



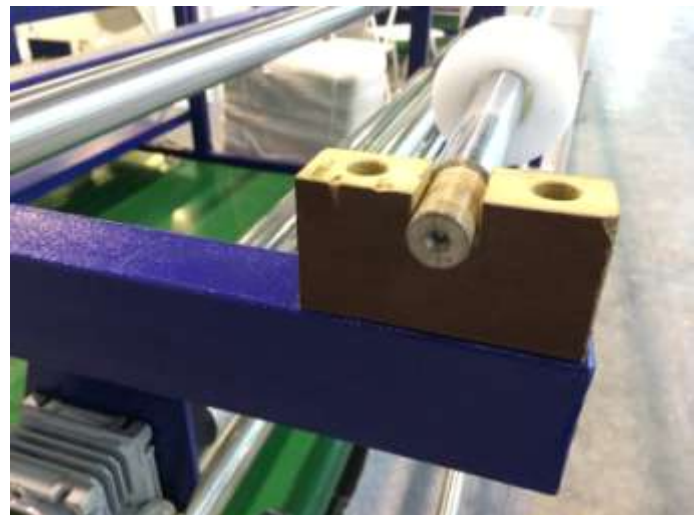
Eastsign Conveyor Belt



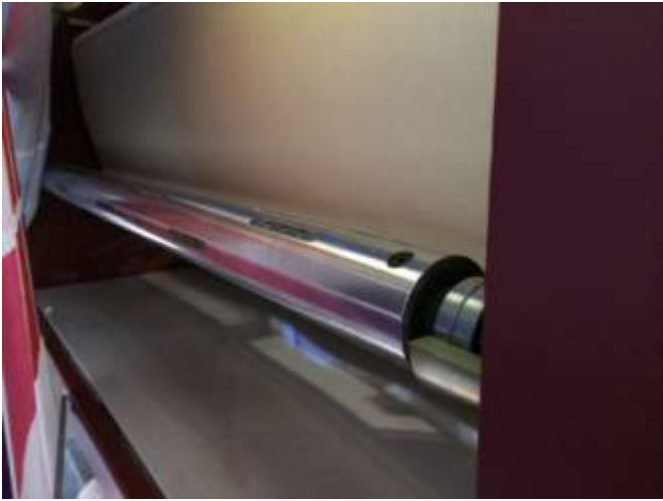
Conveyor Belt from other manufacturer



U shape aluminium holder



Common plastic holder



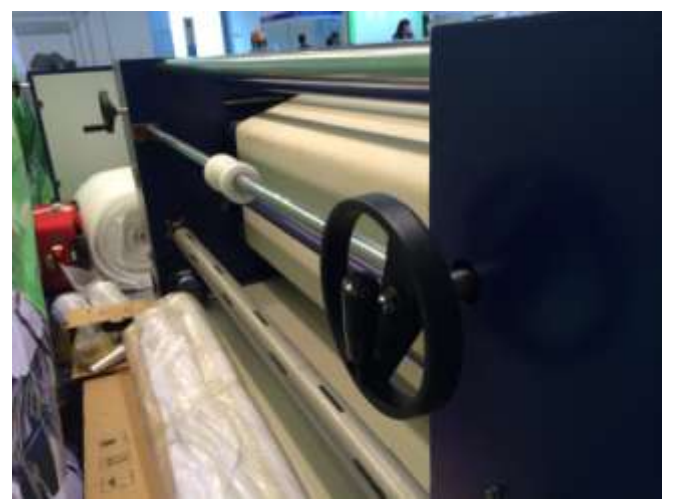
Air expanding shaft for paper take-up



Common paper take-up



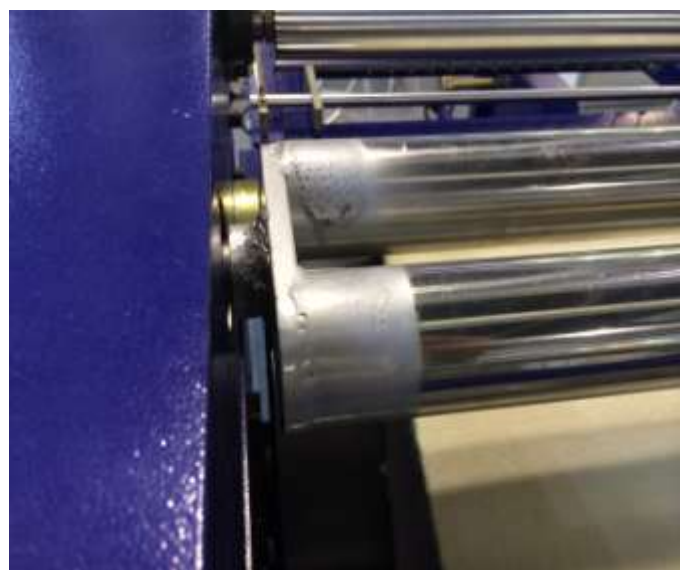
Blanket separation device



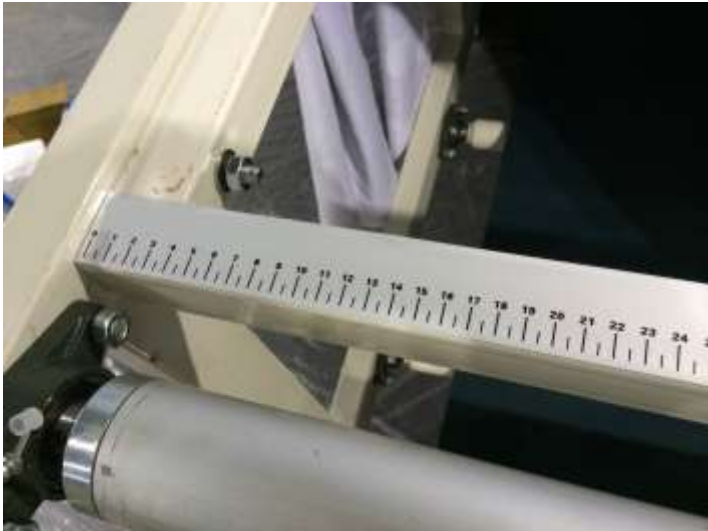
Blanket separation of other manufacturer



Tension axle of Eastsign



Tension axle of other manufacturer



Meter on working table